

ARCHITECTURAL DATA SHEET

Rosi

Architectural Linear — Interior

Light, held in line.

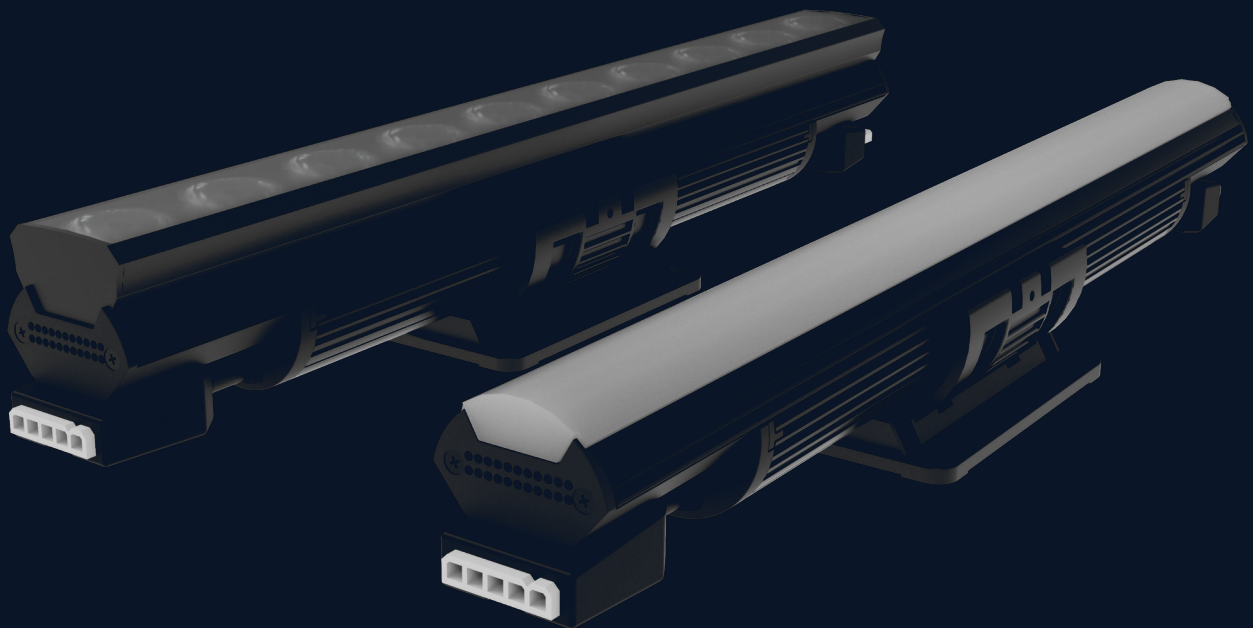
Interior-rated, high-performance LED linear cove luminaire. Three field-selectable optics — 100° wash, 15° spot, and 17×35° elliptical — share a single DMX-RDM RGBW platform and Dynamic White output across 1' and 4' lengths.

100° · 15° ·
17×35°

IP40 INTERIOR

DMX RGBW · DW

100-277VAC



AVAILABLE WITH*

Coda™

Forte™

Sense™

Shift™

Token™

Tone™

*Not all technologies are available on every fixture.

O P T I C A L P E R F O R M A N C E

Three optics.

One DMX RGBW platform · field-selectable beam.

100°

Wash · Frosted PC

Wide wash distribution

LED Channels

4 (R · G · RB · W)

Native Output

410 lm / ft (full-on)

R · G · RB · W

165 · 410 · 130 · 320 lm/ft

DW 2700K · 3000K

215 · 185 lm/ft

DW 3500K · 4000K

200 · 220 lm/ft

Power

10 W / ft

Efficacy

38 lm/W

15°

Spot · Optic Array

Focused beam distribution

Per-CCT values provisional.

LED Channels

4 (R · G · RB · W)

Native Output

410 lm / ft (full-on)

R · G · RB · W

185 · 410 · 135 · 350 lm/ft

DW 2700K · 3000K

220 · 350 lm/ft

DW 3500K · 4000K

335 · 254 lm/ft

Power

10 W / ft

Efficacy

32 lm/W

17×35°

Elliptical · Frosted PC

Linear wash distribution

LED Channels

4 (R · G · RB · W)

Native Output

370 lm / ft (full-on)

R · G · RB · W

150 · 370 · 130 · 300 lm/ft

DW 2700K · 3000K

175 · 160 lm/ft

DW 3500K · 4000K

175 · 190 lm/ft

Power

10 W / ft

Efficacy

32 lm/W

A V A I L A B L E L E N G T H S

305 mm (1') · 1219 mm (4')

All three optics available in both lengths.

E L E C T R I C A L · A L L V A R I A N T S

Input Voltage	100-277VAC, auto-ranging, 50/60Hz
Power Consumption	10 W typ / linear foot (steady state)
Power Factor	0.99 @ 120VAC · 0.90 @ 277VAC
Surge	4 kV maximum common (Gnd to L, Gnd to N)

Calculated values · actual results vary within ±5%

© 2026 Arco Illumination Pte. Ltd.

02 / 04

Built for the field.

Shared across all three optics.

Mechanical

Dimensions (1')

47 × 50 × 305 mm

Dimensions (4')

47 × 50 × 1219 mm

Weight

0.6 kg (1')

1.8 kg (4')

Profile Height

47 mm (100° wash)

54 mm (15° / 17×35°)

Housing

Extruded aluminum

Black powder-coated

Lens

Frosted PC (100° / 17×35°)

Optic array (15°)

Connections

Integral male/female

Quick connectors

Mounting

Integral bracket feet

Environment

Operating Temp

-40 to 50° C

Startup Temp

-20 to 50° C

Storage Temp

-40 to 80° C

Ingress Rating

IP40 — Dry / Damp

Interior only

Impact

IK06

Vibration

N/A — interior product

Humidity

0 - 95%, non-condensing

Corrosion

N/A — interior product

Compliance

Approbation

ETL · CE

Location

Dry · Damp

Interior only

Standards

IEC 60529 (IP)

IEC 62262 (IK)

RoHS

Compliant

Patent Portfolio

Protected by an 80+
patent portfolio across
US, EU, Asia

AVAILABLE WITH*

Coda™

Forte™

Sense™

Shift™

Token™

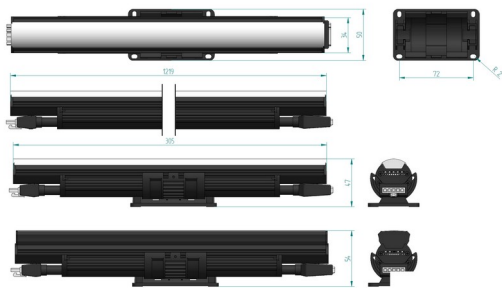
Tone™

*Not all technologies are available on every fixture.

Geometry and output.

1' and 4' dimensions · 4' 100° photometric reference (RGBW 3000K).

Dimensions



All dimensions in mm. Detailed CAD drawings available on request.

Photometrics

100° Wash · RGBW 3000K · 4' section

Beam Angle	105.5°
Lumens	1,641.3 lm
Input Power	44.8 W
Efficacy	36.6 lm/W
Peak Candela	564.2 cd

ZONAL LUMEN SUMMARY

Zone (°)	Lumens	% Lum.
0-30	427.2	26.0
0-40	689.3	42.0
0-60	1,186.0	72.3
60-90	368.0	22.4
0-90	1,554.1	94.7

CENTER BEAM · BEAM WIDTH

Distance · fc / lx · width (cm)

1.5 m	23.3 / 250.7	394
2.0 m	13.1 / 141.0	526
4.0 m	3.3 / 35.3	1052
5.0 m	2.6 / 27.9	1184
6.0 m	1.5 / 15.7	1578

Full IES photometric files for each variant available at arco-illumination.com or on request.

C O N T A C T

Specify Rosi.

Singapore HQ

Arco Illumination Pte. Ltd.
No. 8 Penjuru Lane
Singapore, 609189

Online

arco-illumination.com
info@arco-illumination.com

OEM · Distributor

partnerships@arco-illumination.com